







# Damage caused by cattle to *Eucalyptus benthamii* trees in pruned and unpruned silvopastoral systems

**Abstract** – The objective of this work was to evaluate the effect of tree pruning on the incidence and intensity of damages caused by cattle to 26-month-old *Eucalyptus benthamii*, in a silvopastoral system, in the city of Pinhais, PR, Brazil, in an Environmental Protection Area (EPA). The experiment was performed in a randomized complete block design, with two treatments – livestock and forest with pruned eucalyptus (WP), and livestock and forest with unpruned eucalyptus (UP) –, and three replicates characterizing six types of damages and five damage intensities. There were significant differences between the WP and UP treatments for the different types of damages. Cattle entry in the silvopastoral system at 26 months after the planting of eucalyptus causes low-intensity damages to the trees, in the treatment with pruning, and medium-intensity damages to the trees in the treatment without pruning. Damages of stronger intensities were detected in trees of the UP treatment, in which class-two damages ( $d_2$  = average damage) amounted to approximately 91%. The silvicultural practice of pruning *E. benthamii* trees does not affect the diameter at breast height, or the total height of trees. Pruning can be recommended, as it does not affect the tree development; moreover, it enables the production of knot-free, better quality wood.

**Index terms:** diameter at breast height, forest, forestry, quality wood.

## Danos causados por bovinos a *Eucalyptus benthamii*, com ou sem desrama, em sistemas silvipastoris

**Resumo** – O objetivo deste trabalho foi avaliar o efeito da desrama sobre a incidência e intensidade de danos causados por bovinos a *Eucalyptus benthamii* aos 26 meses de idade, no município de Pinhais, PR, Brasil, em uma Área de Proteção Ambiental (APA). O experimento foi feito em um delineamento de blocos completos ao acaso, com dois tratamentos – pecuária-floresta com eucaliptos desramados (WP) e pecuária-floresta com eucaliptos sem desrama (UP) –, com três repetições que caracterizaram seis tipos de danos e cinco intensidades. Houve diferenças significativas entre os tratamentos WP e UP para os diferentes tipos de danos. A entrada de bovinos no sistema silvipastoril, 26 meses após o plantio de eucalipto, causa danos de baixa intensidade às árvores, no tratamento com desrama, e danos de média intensidade às árvores no tratamento sem desrama. Danos de maiores intensidades foram registrados no tratamento UP, em que o dano de classe dois ( $d_2$  = dano médio) foi verificado em aproximadamente 91% das árvores. A prática silvicultural de desrama das árvores de *E. benthamii* não afeta o diâmetro à altura do peito nem a altura total das árvores. A desrama pode ser

Gilmar Paulinho Triches<sup>(1)</sup> ,  
Anibal de Moraes<sup>(2)</sup> ,  
Vanderley Porfírio-da-Silva<sup>(3)</sup> ,  
Claudete Reisdorfer Lang<sup>(2)</sup> ,  
Sebastião Brasil C. Lustosa<sup>(4)</sup>  and  
Rafael Araújo Bonatto<sup>(2)</sup> 

<sup>(1)</sup> Instituto Federal Catarinense, Campus Rio do Sul, Estrada do Redentor, n.º 5.665, CEP 89163-356 Rio do Sul, SC, Brazil. E-mail: [gilmartriches@gmail.com](mailto:gilmartriches@gmail.com)

<sup>(2)</sup> Universidade Federal do Paraná, Departamento de Fitotecnia e Fitossanitarismo, Rua dos Funcionários, n.º 1.540, CEP 80035-050 Curitiba, PR, Brazil. E-mail: [anibalm@ufpr.br](mailto:anibalm@ufpr.br), [langc@ufpr.br](mailto:langc@ufpr.br), [rsk8bonatto@hotmail.com](mailto:rsk8bonatto@hotmail.com)

<sup>(3)</sup> Embrapa Florestas, Estrada da Ribeira, Km 111, Caixa Postal 319, CEP 83411-000 Colombo, PR, Brazil. E-mail: [vanderley.porfirio@embrapa.br](mailto:vanderley.porfirio@embrapa.br)

<sup>(4)</sup> Universidade Estadual do Centro-Oeste, Rua Camargo Varela de Sá, n.º 03, CEP 85040-080 Guarapuava, PR, Brazil. E-mail: [slustosa@unicentro.br](mailto:slustosa@unicentro.br)

✉ Corresponding author

Received  
February 09, 2019

Accepted  
April 21, 2020

**How to cite**  
TRICHES, G.P.; MORAES, A. de; PORFÍRIO-DA-SILVA, V.; LANG, C.R.; LUSTOSA, S.B.C.; BONATTO, R.A. Damage caused by cattle to *Eucalyptus benthamii* trees in pruned and unpruned silvopastoral systems. **Pesquisa Agropecuária Brasileira**, v.55, e01275, 2020. DOI: <https://doi.org/10.1590/S1678-3921.pab2020.v55.01275>.

recomendada, já que não influencia o desenvolvimento das árvores; além disso, essa prática possibilita a produção de madeira sem nós, de melhor qualidade.

**Termos para indexação:** diâmetro à altura do peito, floresta, silvicultura, madeira de qualidade.

## Introduction

The interest in silvopastoral and agroforestry systems has increased significantly in Brazil. Practices such as livestock and forestry integration ensued after research and extension programs, which were fostered by the Brazilian federal government, such as the low-carbon agriculture program (“Agricultura de Baixo Carbono”, ABC Program), created in 2010, and the “Integra SP” project, designed in 2013 in São Paulo state.

Silvopastoral systems (SPS) integrate livestock and timber production in the same area. The association of adequately managed trees with pastures may provide an extra source of income for the farmer, as well it may improve environmental protection and promote animal welfare, while increasing soil fertility and pasture production (Porfírio-da-Silva et al., 2010). It is a dynamic and complex system, since it integrates elements of different natures (Balbino et al., 2011). These systems are also considered a high-investment forest component, and their results are obtained in the long term (Kichel et al., 2014). Therefore, the selection of species and their genetic material are important points to be considered for the system to become successful.

The SPS has proved a viable supply of wood products and brought additional revenues to farmers. However, the sustainability of the ecosystem as a whole should be expected, instead of the maximum productivity of these systems’ components (Bernardi et al., 2014).

The establishment of tree seedlings in the pasture paddock is a critical phase for the system, and this step requires specific care, since any damage caused to the trees at this stage of their development may compromise the system’s success (Porfírio-da-Silva et al., 2010).

However, even after the trees grow enough to endure the presence of cattle, tree bark damages can still be caused by the animals (Medrado et al., 2009; Porfírio-da-Silva et al., 2012; Guerreiro et al., 2015). Tree bark damage depreciates the wood quality and may even lead to tree death.

The factors or causes for the removal of eucalyptus bark by cattle are unknown. The suggested hypotheses to explain this type of animal behavior are related to the animal’s nutritional state (deficiencies in certain minerals, protein, and energy), to the concentration and quality of ingested fibers (Malafaia et al., 2011; Villalba et al., 2014), to the presence of endoparasites (Saint-Andrieux et al., 2009; Villalba et al., 2013), and, also, to behavioral aspects of the animals (Berridge & Kringelbach, 2008).

Possible factors that make cattle look for food in tree species, and not in forage, may be linked to the quality and quantity of forage available to the animals, according to Brun et al. (2017). These authors also mention that forage quality and quantity are linked to genetic factors related to the selection of forage species / varieties appropriate for each animal species or breed, and to the quality of the soil, which is the basis for the development and nutritional quality of forages.

Pruning is a silvicultural practice recommended for the production of logs and for the mitigation of competition for light from treetops. In the SPS, in addition to improving the quality of wood for sawmill, pruning favors the animal movement and allows of a greater availability of radiation between the lines of trees, thus contributing to the maintenance or even the increase of pasture productivity (Fontan, 2007).

Porfírio-da-Silva et al. (2012) recommended pruning to reduce leaf damages, as well as to avoid the breaking of branches and sprouts in silvopastoral systems, since these damages allow of the entrance of pathogenic organisms and the formation of ‘loose knots’ which depreciate the wood quality.

The objective of this work was to evaluate the effect of tree pruning on the incidence and intensity of damages caused by cattle to 26-month-old *Eucalyptus benthamii* Maiden et Cabbage, in a silvopastoral system within an EPA area, since no specific works were found in the literature for this species of eucalyptus.

## Materials and Methods

The experiment is part of the project developed by the center of technological innovation for agriculture (Núcleo de Inovação Tecnológica em Agropecuária, NITA), of Universidade Federal do Paraná, in the Canguiri experimental farm (25°23’30”S, 49°07’30”W, at 920 m altitude), in the municipality of Pinhais, in

the state of Paraná, Brazil. The experimental farm is located within the Environmental Protection Area (EPA) of Rio Iraí (Paraná, 1996), in the banks of the Iraí dam.

The climate is Cfb, according to the Köppen-Geiger's classification. The average annual precipitation ranges from 1,400 to 1,600 mm, with no defined dry season, and the average annual temperatures range from below 18°C, in colder months, to below 22°C, in warmer months (IAPAR, 2014).

The soils of the area have been classified as Cambissolos (Cambisols), Latossolos (Oxisols) and their associations, with smaller portions of Organossolos (Organosols) and Gleissolos (Gleysols), according to the Brazilian Soil Classification System (Santos et al., 2018).

The experiment was carried out in 2012, and the following protocol was adopted: conventional soil tillage by deep plowing with a plow and later grading (June and July); soil correction, using 10 Mg ha<sup>-1</sup> limestone, plus sewage sludge treated using the N-VIRO process, obtained from the sewage treatment company of the municipality of Curitiba, in the state of Paraná, Brazil (July and August); and sowing of black oat (*Avena strigosa* 'IAPAR 61') at 80 kg ha<sup>-1</sup> for soil cover, and fertilization with 450 kg ha<sup>-1</sup> single superphosphate to the line.

In January and February 2013, a conventional soil preparation for the sowing of perennial summer pasture was carried out. *Megathyrsus maximus* 'Aries' was seeded in lines (16 kg ha<sup>-1</sup>), and 350 kg ha<sup>-1</sup> single superphosphate plus 800 kg ha<sup>-1</sup> ammonium chloride were applied to the line. During the pasture establishment phase, mowings were performed three times to reduce weed competition.

In September 2013, the tree lines were marked, and *Eucalyptus benthamii* seedlings of seminal origin, produced in tubes, were planted in October 2013. This species was chosen mainly due to its resistance to frost, and to its use as a final product for logs and rolling mills at the end of the 20-year cycle.

Eucalyptus trees were planted in single rows with 14 m spacing between rows and 2 m spacing between plants, with the aim at obtaining an initial density of 357 trees per hectare. The trees were planted in contour lines to conserve soil and water and to control erosion, as well as to improve the animals' thermal comfort, and to mitigate the impact of tracks made by animals

walking on terrain slopes (Porfirio-da-Silva et al., 2010).

The sowing line was subsoiled at 40 cm depth. The trees were then planted manually using a hoe. Next, 250 mL of a hydrogel solution (commercial brand Hidrogel HyB, Hidroplan-EB, São Paulo, SP, Brazil) were applied to each seedling, according to the manufacturer's recommendations. Subsequently, 200 g N-P<sub>2</sub>O<sub>5</sub>-K<sub>2</sub>O (08-20-20) containing 1% calcium (Ca) and 3% sulfur (S) were applied in two lateral pits (15 cm away from the seedling and 15 cm deep).

The fertilization procedure was based on the soil analysis. In the first year (2013), fertilizers were applied in two stages: the first application was performed in September, using 450 kg ha<sup>-1</sup> single superphosphate and 400 kg ha<sup>-1</sup> N-P<sub>2</sub>O<sub>5</sub>-K<sub>2</sub>O of the formulation 25-00-25; and the second application was performed in October, using 200 kg ha<sup>-1</sup> urea on the soil's surface.

In 2014, fertilizers were applied in three stages. In the first stage, the fertilization was performed in the second fortnight of May, using 600 kg ha<sup>-1</sup> natural phosphate, 200 kg ha<sup>-1</sup> potassium chloride, and 200 kg ha<sup>-1</sup> urea, after the winter pastures (oats) were planted. In the second stage, in September, 450 kg ha<sup>-1</sup> single superphosphate were applied. In the third stage, in November, 450 kg ha<sup>-1</sup> urea were applied to the soil's surface.

In 2015, fertilizers were applied in two stages. In the first stage, the application occurred in the second fortnight of May, after the winter pastures (oats) were planted, using 300 kg ha<sup>-1</sup> natural phosphate, 100 kg ha<sup>-1</sup> potassium chloride, and 300 kg ha<sup>-1</sup> urea. In the second stage, the fertilization was performed in the end of December with 200 kg ha<sup>-1</sup> urea to the soil's surface at the end of December.

The use of herbicides is not allowed in EPA areas. Therefore, the weed control was performed manually using hoes and motorized brush cutters, during the first 120 days after seedlings were planted. During the seedling planting process, replanting was necessary for about 20% of the experiment's trees, as some seedling deaths occurred mainly because of plant competition and ant attacks.

Ant control was done by applying the Formifuu paste (Formifuu, Veranópolis, RS, Brazil) to all seedlings after 15 days of planting. Orange peels were also used; they were weekly distributed at strategic points both in the area and on its outskirts, to attract



ants and reveal the location of their nests, which were then mechanically destroyed.

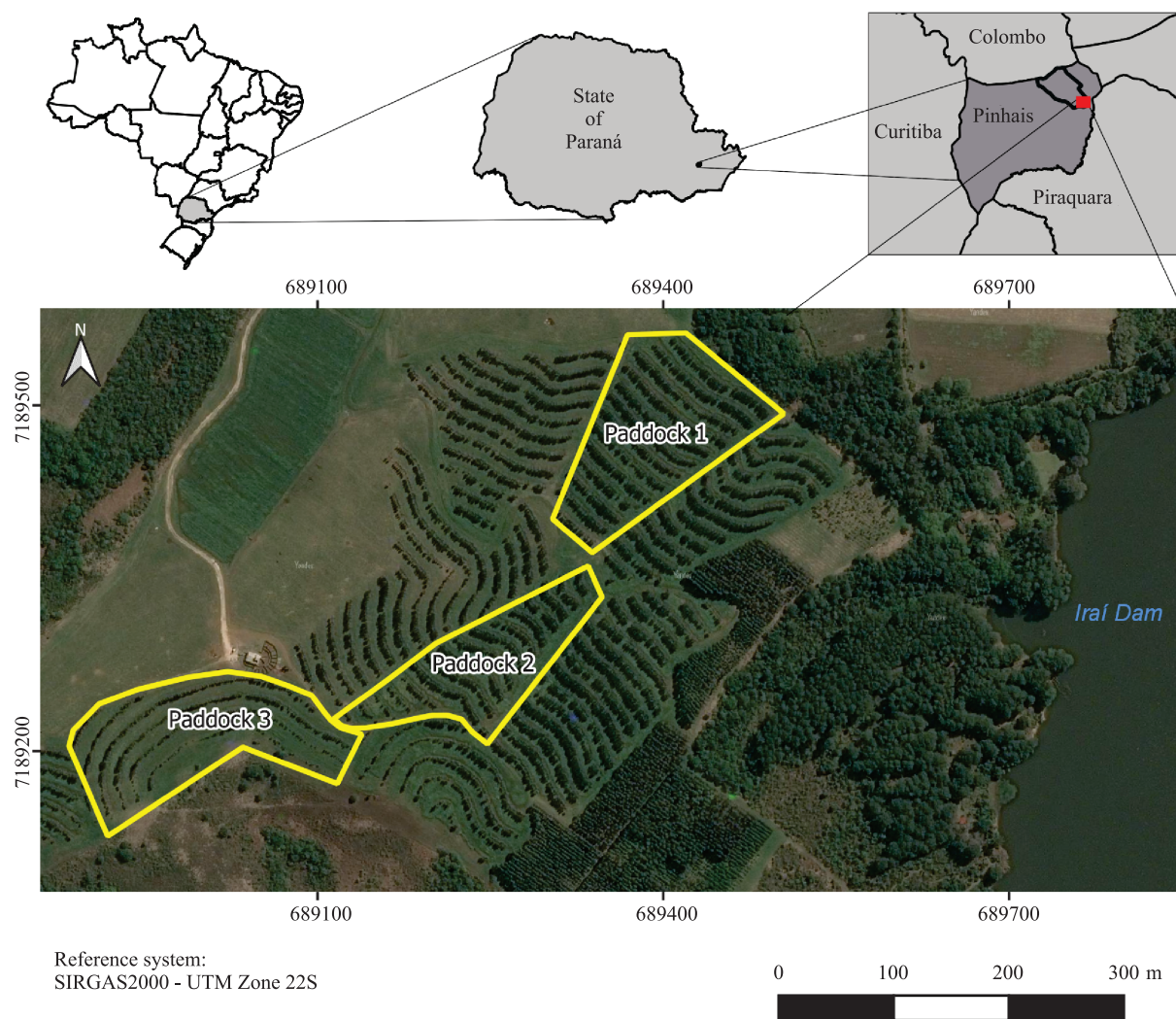
In July 2015, the first tree pruning under the WP treatment was performed. At that time, the branches up to half of each tree's height were removed, since the trees had already exceeded 6 cm mean diameter at breast height (DBH), which is the minimum size necessary to support the presence of cattle without breaking the trunk of the tree (Medrado et al., 2009; Porfírio-da-Silva et al., 2012).

The animals entered the experiment when the trees were at 26 months of age and featuring 10.41 cm mean DBH (December 2015).

The experimental area that was 4.8 ha was divided, using an electric fence, in three paddocks that ranged from 1.3 to 1.8 ha each (Figure 1). The animals had water and mineralized salt freely available in all paddocks.

The experiment was carried out in a randomized complete block design with two treatments, pruned eucalyptus (WP) and unpruned eucalyptus (UP), and six types of damage, with three replicates (paddocks) from 1.3 to 1.8 ha each. The blocks were defined according to differences for the soil-slope types.

The animals used in the experiment were of no specific breed; they had 285 kg ( $\pm$  54 kg) mean live



**Figure 1.** Distribution of *Eucalyptus benthamii* in the experimental area, at the Canguiri experimental farm of Universidade Federal do Paraná, Pinhais, PR, Brazil, 2016.

weight and ages ranging from 01 to 03 years. They were distributed in the paddocks considering their average weight, in order to keep the animal load proportional to the paddock's area.

The grazing period started on 11/27/2015 and ended on 04/13/2016, totaling 138 grazing days. It was managed under continuous stocking, with variable animal load (Mott & Lucas, 1953), and the pasture was maintained at 28 cm ( $\pm$  5 cm) average height.

A systematic inventory was performed on 10% of the trees, before and after the animals' arrival on the experiment; and DBH and total height were measured at the beginning and at the end of the grazing period. The mean DBH and mean height of the trees at 26 months of age, in December 2015, were respectively of 10.23 cm and 9.37 m under the UP, and of 10.59 cm and 9.15 m under the WP treatment.

The paddock treatments were distributed by alternating lines of WP and UP trees, and 1,142 trees were evaluated, 594 of which under the WP treatment, and 548 under the UP treatment.

The tree damages caused by cattle were evaluated at the end of the grazing period (April 2016), when the trees were 30 months of age. The method described by Porfírio-da-Silva et al. (2012) was adopted to evaluate the damages.

The damages caused by the animals were classified according to the damaged parts (incidence) of the affected plants, as: Tb, trunk breakage; Ti, trunk injury reaching the wood, with removal of the cambium tissue; Bb, branch breakage; Bi, bark injury not reaching the cambium tissue; Sb, stem breakage and browsing on leaves; and Li, large injury (larger than 5 cm diameter). A weighting and scoring system was established for the different types of damages: Tb = 10.0; Ti = 4.0; Bb = 2.0; Bi = 1.5; Sb = 1.0; and Li = 1.0. The criterion adopted according to Porfírio-da-Silva et al. (2012) seeks to relate the type of damage and its importance for the future development of the tree.

The final score for each individual is the sum of its damages, except for the Tb damage, whose incidence has a maximum score of 10 irrespectively of the occurrence of other types of damage. The occurrence of Li, Ti, and Bb damages was always associated with other damages.

According to the adopted criterion, five classes of damage intensity (d) were established: d0, null (no damage, score 0); d1, low (scores between 0 and 3); d2, mean (scores from 3 to 6); d3, high (scores

from 6 to 10); and d4, extreme (score 10). Data were collected from all trees in the experiment (1,142 plants) to quantitatively describe and qualify the damages identified in the treatments.

All six types of damage (Tb, Ti, Bb, Bi, Sb, Li), as well as the means of the damage scores (d0, d1, d2, d3, and d4) caused by the animals were compared between and within each treatment (WP and UP), using the Tukey's test, at 5% probability.

The variance of the sum of damages was analyzed for homogeneity, using the Bartlett test, to verify the normality of the data for use in assumptions for the analysis of variance, to evaluate the damages within each treatment and among treatments. The Assistat program version 7.7 beta was used for the statistical analysis (Silva & Azevedo, 2009).

## Results and Discussion

There were significant differences among the types of damage in *Eucalyptus benthamii*, under both the WP and UP treatments. Under the WP treatment, the damage with the highest incidence was the bark injury not reaching the cambium (Bi), with 78.5% (Figure 2).

Under the UP treatment, the damages with highest incidences were branch breakage (Bb) and stem breakage and browsing on leaves (Sb) that were detected in 100% of the trees. There were also a high incidence (86.5%) of bark injury (Bi), under the UP treatment, and 68.8% large injuries – larger than 5 cm in diameter (Li) (Figure 2).

*Eucalyptus* susceptibility to bovine damage was previously reported by Medrado et al. (2009), who reported a generalized damage to *Eucalyptus grandis* at three years of age, in a silvopastoral system with *Urochloa brizantha* 'Xaraés', in Paraná stat, Brazil. Damages in 61% of the trees increased to 92% over one year, and reached the xylem in 30% of the trees.

Guerreiro et al. (2015) evaluated the susceptibility of 10 species of eucalyptus or their clones to bovine damage, in a silvopastoral system (in the city of Brotas, São Paulo state, Brazil), and observed significant differences for damage level between the various eucalyptus species, or clones. They identified that the most affected species was *Eucalyptus grandis*, on which 58% of the injuries caused to the bark reached the wood.

In the present work, we observed that the damage was concentrated mainly on leaves, branches, and bark. Trunk breakage (Tb) was observed only in trees with DBH smaller than 6 cm, with 2.2% incidence under the WP treatment, and 4.2% under the UP treatment. These findings coincide with the results obtained by Porfírio-da-Silva et al. (2012), who reported breakages by livestock only in trees with DBH smaller than 6 cm.

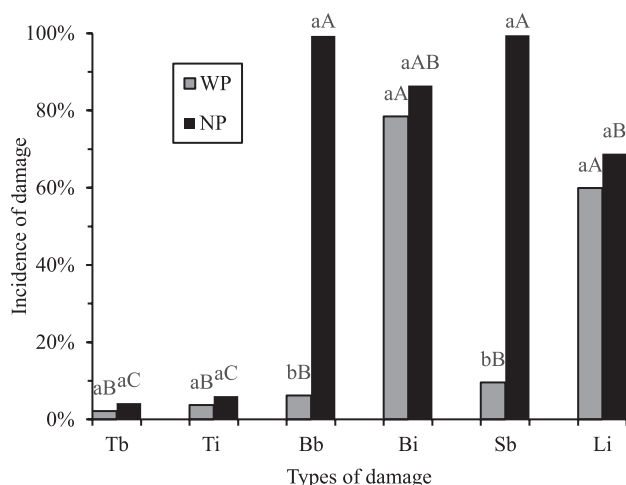
Almost 100% of stem breakages and browsing on leaves (Sb) and branch breakage (Bb) were observed under the UP treatment, while the incidence of these damages was of 9.6 and 6.2% under the WP treatment (Figure 2). Stem breakages and browsing on leaves (Sb), and branch breakages (Bb), in the UP treatment, were detected because some of the trees in the treatment were below the average height, which left branches and leaves exposed to cattle damages.

According to Porfírio-da-Silva et al. (2012), stem breakage and browsing on leaves (Sb) should be

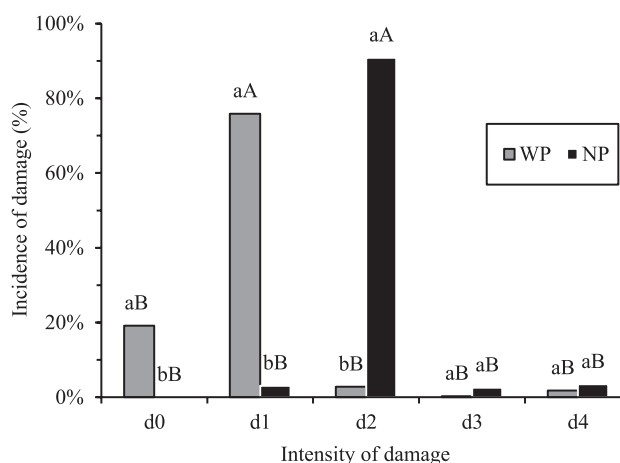
expected in silvopastoral systems, especially when the animals are able to reach the branches. Pruning is suggested to reduce this occurrence, as well as branch breakage (Bb). Although the breaking of some leaves does not negatively affect the tree development, broken branches may cause lesions that allow of the entry of pathogenic organisms.

There were significant differences for damage intensity between the WP and UP treatments in *Eucalyptus benthamii* (Figure 3). Under the WP treatment, the damage intensity with higher incidence was d1, with 75.9%, which is considered an intensity of low importance, while under the UP treatment, the damage intensity with higher incidence was d2, detected in 90.9% of the trees, which is considered of medium importance for the future development of the tree.

The tree bark performs a wide range of functions in trees. The innermost layer of the bark plays an important role in transporting and storing photoassimilates, while the outermost layer protects the plant against the



**Figure 2.** Incidence and types of damage caused by cattle (bovine) to *Eucalyptus benthamii*, in a silvopastoral system, in treatments with pruning (WP) or unpruned (UP), at the Canguiri experimental farm of Universidade Federal do Paraná, Pinhais, PR, Brazil, in 2016: Tb, trunk breakage; Ti, trunk injury reaching the wood with removal of the cambium tissue; Bb, branch breakage; Bi, bark injury not reaching the cambium tissue; Sb, stem breakage and browsing on leaves; and Li, large injury (larger than 5 cm in diameter). Means followed by equal, lowercase letters, do not differ between treatments, and those followed by equal, uppercase letters, do not differ between types of damage, by Tukey's test, at 5% probability.



**Figure 3.** Incidence and intensity of damage caused by cattle (bovine) to *Eucalyptus benthamii*, with pruning (WP), or unpruned treatments (UP), in a silvopastoral system, at the Canguiri experimental farm of Universidade Federal do Paraná, Pinhais, PR, Brazil, in 2016: d0, nil ( $d_0 = 0$ ); d1, low ( $0 < d_1 \leq 3$ ); d2, medium ( $3 < d_2 \leq 6$ ); d3, high ( $6 < d_3 < 10$ ); and d4, extreme ( $d_4 = 10$ ). Means followed by identical, lowercase letters, do not differ between treatments, and those followed by identical uppercase letters do not differ between damage intensities, by Tukey's test, at 5% probability.



ingress of pathogens and protects the adjacent tissues from mechanical injury (Romero, 2006).

The extent of the damage depends on the depth and degree of the damage to the tree bark. When the lesion is restricted to the plant's surface and does not reach the cambium tissue, the damaged part recovers evenly. In the case of a deeper damage, scarring is often only partial, with a portion of the wood becoming apparent, which may serve as a gateway for disease infection and pest attack, which may even cause death to the tree (Medrado et al., 2009). When deep lesions occur in the tree bark, a carbohydrate derived from parenchyma tissues is deposited to close the lesion (Romero, 2006). This may increase the cattle's attraction to the tree (Porfírio-da-Silva et al., 2012).

Only 19.1% of the trees under the WP treatment showed no damage (d0). All other trees underwent some type of damage (Figure 3).

Although all treatments were damaged by cattle, a significant difference was observed by Tukey's test ( $p < 0.05$ ) in the mean of the scores assigned to the different types of damages. The WP treatment showed the lowest damage score average (1.67), which qualifies its damage intensity as low; while the UP treatment, with an average score of 5.03, is classified as of medium damage intensity (Table 1).

According to Pinkard (2002), pruning decreases the photosynthetic area of the trees, and may reduce the carbohydrate supply and growth regulators produced in the canopy, therefore reducing the trees' growth in diameter and height. This effect was reported by Barbosa et al. (2014), when evaluating the impact of sheep on the trees of a silvopastoral system planted with an *E. grandis* x *E. urophylla* hybrid at 24 months

of age; these authors observed that artificial pruning affected the growth of the trees.

In the present experiment no such difference for growth – DBH and height – of *E. benthamii* trees was observed between the UP and WP treatments (Table 1). At 30 months of age, the mean DBH for *E. benthamii* was 11.83 cm under the WP treatment, and of 11.17 cm under the UP treatment. The total height was 10.40 m under the WP treatment, and 9.72 m under the UP treatment. There were no significant differences for DBH and total height between the WP and UP treatments.

## Conclusions

1. Cattle entry into the silvopastoral system, at 26 months after planting of *Eucalyptus benthamii*, causes low- and medium-intensity damages to the trees, mainly on leaves, branches, and barks, in the treatments with and without pruning, respectively.

2. The practice of pruning of *Eucalyptus benthamii* trees do not affect the diameter at breast height and total height of the trees, and it enables the production of knot-free, better quality wood, contributing to reduce the incidence and intensity of damages caused by cattle in the evaluated silvopastoral system.

## Acknowledgments

To Coordenação de Aperfeiçoamento de Pessoal de Nível Superior (Capes, Finance code 001), and Instituto Federal Catarinense (IFC), for their financial support and scholarships.

## References

- BALBINO, L.C.; CORDEIRO, L.A.M.; PORFÍRIO-DA-SILVA, V.; MORAES, A. de; MARTÍNEZ, G.B.; ALVARENGA, R.C.; KICHEL, A.N.; FONTANELI, R.S.; SANTOS, H.P. dos; FRANCHINI, J.C.; GALERANI, P.R. Evolução tecnológica e arranjos produtivos de sistemas de integração lavoura-pecuária-floresta no Brasil. **Pesquisa Agropecuária Brasileira**, v.46, p.i-xii, 2011. DOI: <https://doi.org/10.1590/S0100-204X2011001000001>.
- BARBOSA, C.M.P.; GONZALEZ, L.R.; CAÇÃO, M.M. de F.; BRITO, J. de J.; SILVA FILHO, O.C. da; PORFÍRIO-DA-SILVA, V. Danos causados por ovelhas em árvores de eucalipto em um sistema silvipastoril distribuído em dois modelos espaciais. In: SIMPÓSIO INTERNACIONAL DE ARBORIZAÇÃO DE PASTAGENS EM REGIÕES SUBTROPICAIS, 1., Curitiba, 2013. **Anais**. Colombo: Embrapa Florestas, 2014. p.48-56. (Embrapa Florestas. Documentos, 268).

**Table 1.** Damage caused by cattle (bovine) to *Eucalyptus benthamii* trees in pruning (WP), or unpruned (UP) treatments, in a silvopastoral system, and diameter at breast height (DBH) and height (H) at 30 months, at the Canguiri experimental farm of Universidade Federal do Paraná, Pinhais, PR, Brazil, 2016.

Treatment	Damage <sup>(1)</sup>	DBH (cm)	Height (m)
With pruning	1.67b	11.83a	10.40a
Unpruned	5.03a	11.17a	9.72a

<sup>(1)</sup>Mean scores assigned to the different types of observed damage: nil (d0 = 0), low (0 < d1 ≤ 3), medium (3 < d2 ≤ 6), high (6 < d3 < 10), and extreme (d4 = 10). Means followed by identical letters, in the same column, do not differ by Tukey's test, at 5% probability.

- BERNARDI, C.M.M.; MACEDO, H.R.; PINHEIRO, R.S.B.; FREITAS, M.L.M. Florestas plantadas de eucalipto em sistemas silvipastoris e o impacto da entrada do componente animal. **Revista Verde de Agroecologia e Desenvolvimento Sustentável**, v.9, p.125-132, 2014.
- BERRIDGE, K.C.; KRINGELBACH, M.L. Affective neuroscience of pleasure: reward in humans and animals. **Psychopharmacology**, v.199, p.457-480, 2008. DOI: <https://doi.org/10.1007/s00213-008-1099-6>.
- BRUN, E.J.; DALPOSSO, D.M.; KUSS, F.; SARTOR, L.R.; BRUN, F.G.K.; PERETIATKO, C.D.S. Danos causados por gado leiteiro no componente arbóreo de um sistema silvipastoril. **Ecologia e Nutrição Florestal**, v.5, p.33-44, 2017. DOI: <https://doi.org/10.5902/2316980X25634>.
- FONTAN, I. da C.I. **Dinâmica de copa e crescimento de clones de eucalipto submetidos a desrama em sistema agroflorestal**. 2007. 68p. Dissertação (Mestrado) - Universidade Federal de Viçosa, Viçosa.
- GUERREIRO, M.F.; NICODEMO, M.L.F.; PORFÍRIO-DA-SILVA, V. Vulnerability of ten eucalyptus varieties to predation by cattle in a silvopastoral system. **Agroforestry System**, v.89, p.743-749, 2015. DOI: <https://doi.org/10.1007/s10457-015-9797-7>.
- IAPAR. Instituto Agrônômico do Paraná. **Atlas Climático do Paraná: classificação climática**. 2014. Available at: <<http://www.iapar.br/modules/conteudo/conteudo.php?conteudo=863>> Accessed on: Mar. 1 2020.
- KICHEL, A.N.; COSTA, J.A.A. da; ALMEIDA, R.G. de; PAULINO, V.T. Sistemas de integração lavoura-pecuária-floresta (iLPF) - experiências no Brasil. **Boletim de Indústria Animal**, v.71, p.94-105, 2014. DOI: <https://doi.org/10.17523/bia.v71n1p94>.
- MALAFIA, P.; BARBOSA, J.D.; TOKARNIA, C.H.; OLIVEIRA, C.M.C. Distúrbios comportamentais em ruminantes não associados a doenças: origem, significado e importância. **Pesquisa Veterinária Brasileira**, v.31, p.781-790, 2011. DOI: <https://doi.org/10.1590/S0100-736X2011000900010>.
- MEDRADO, M.J.S.; PORFÍRIO-DA-SILVA, V.; DERETI, R.M.; FONSECA, L.R. da; MAIER, T.F.; PINTON, A.L.M. **Danos provocados em eucalipto por bovinos criados em sistema silvipastoril no município de Cruzmaltina, PR**. Colombo: Embrapa Florestas, 2009. 8p. (Embrapa Florestas. Comunicado técnico, 243).
- MOTT, G.O.; LUCAS, H.L. The design, conduct, and interpretation of grazing trials on cultivated and improved pastures. In: INTERNATIONAL GRASSLAND CONGRESS, 6., 1952, State College. **Proceedings**. State College: Pennsylvania State College, [1953]. v.2. p.1380-1385.
- PARANÁ. Decreto nº 1753, de 6 de maio de 1996. [Institui a Área de Proteção Ambiental na área de manancial da bacia hidrográfica do rio Iraí, denominada APA Estadual do Iraí]. **Diário Oficial [do] Estado do Paraná**, 6 maio 1996.
- PINKARD, E.A. Effects of pattern and severity of pruning on growth and branch development of pre-canopy closure *Eucalyptus nitens*. **Forest Ecology and Management**, v.157, p.217-230, 2002. DOI: [https://doi.org/10.1016/S0378-1127\(00\)00647-2](https://doi.org/10.1016/S0378-1127(00)00647-2).
- PORFÍRIO-DA-SILVA, V.; MEDRADO, M.J.S.; NICODEMO, M.L.F.; DERETI, R.M. **Arborização de pastagens com espécies florestais madeireiras: implantação e manejo**. Colombo: Embrapa Florestas, 2010. 48p.
- PORFÍRIO-DA-SILVA, V.; MORAES, A. de; MOLETTA, J.L.; PONTES, L. da S.; OLIVEIRA, E.B. de; PELISSARI, A.; CARVALHO, P.C. de F. Danos causados por bovinos em diferentes espécies arbóreas recomendadas para sistemas silvipastoris. **Pesquisa Florestal Brasileira**, v.32, p.183-192, 2012. DOI: <https://doi.org/10.4336/2012.pfb.32.70.67>.
- ROMERO, C. **Tree responses to stem damage**. 2006. 143p. Dissertation (Doctor) - University of Florida, [Gainesville].
- SAINT-ANDRIEUX, C.; BONENFANT, C.; TOÏGO, C.; BASILLE, M.; KLEIN, F. Factors affecting beech *Fagus sylvatica* bark stripping by red deer *Cervus elaphus* in a mixed forest. **Wildlife Biology**, v.15, p.187-196, 2009. DOI: <https://doi.org/10.2981/07-100>.
- SANTOS, H.G. dos; JACOMINE, P.K.T.; ANJOS, L.H.C. dos; OLIVEIRA, V.A. de; LUMBRERAS, J.F.; COELHO, M.R.; ALMEIDA, J.A. de; ARAUJO FILHO, J.C. de; OLIVEIRA, J.B. de; CUNHA, T.J.F. **Sistema brasileiro de classificação de solos**. 5.ed. rev. e ampl. Brasília: Embrapa, 2018.
- SILVA, F. de A.S. e; AZEVEDO, C.A.V. de. Principal components analysis in the software Assistat - Statistical Assistance. In: WORLD CONGRESS ON COMPUTERS IN AGRICULTURE AND NATURAL RESOURCES, 7., 2009, Reno. **Proceedings**. St. Joseph: ASABE, 2009. WCCA 2009.
- VILLALBA, J.J.; MILLER, J.; HALL, J.O.; CLEMENSEN, A.K.; STOTT, R.; SNYDER, D.; PROVENZA, F.D. Preference for tanniferous (*Onobrychis viciifolia*) and non-tanniferous (*Astragalus cicer*) forage plants by sheep in response to challenge infection with *Haemonchus contortus*. **Small Ruminant Research**, v.112, p.199-207, 2013. DOI: <https://doi.org/10.1016/j.smallrumres.2012.11.033>.
- VILLALBA, J.J.; MILLER, J.; UNGAR, E.D.; LANDAU, S.Y.; GLENDINNING, J. Ruminant self-medication against gastrointestinal nematodes: evidence, mechanism, and origins. **Parasite**, v.21, art.31, 2014. DOI: <https://doi.org/10.1051/parasite/2014032>.